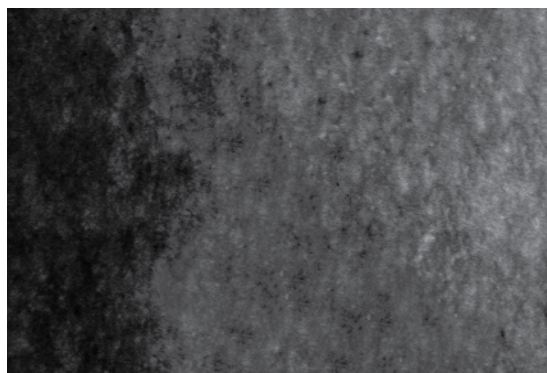


No. 400 - PURE FLEXIBLE GRAPHITE



Description: A flexible graphite sheet. The expanded graphite flake particles are mechanically locked together and adhesive bonded and laminated to the required thickness.

Service: Flexible graphite sheet has pressure-temperature sealability capabilities that are far superior to reinforced non-asbestos sheet products. It is resistant to chemical attack by virtually all organic and inorganic fluids with the exception of concentrated, highly oxidizing acids. Gaskets cut from flexible graphite sheet seal with low to moderated bolt loads and conform to irregular flange sealing surfaces with both smooth and coarse surface finishes.

Temperature Limit: -328°F to 900°F air, 1200°F steam.

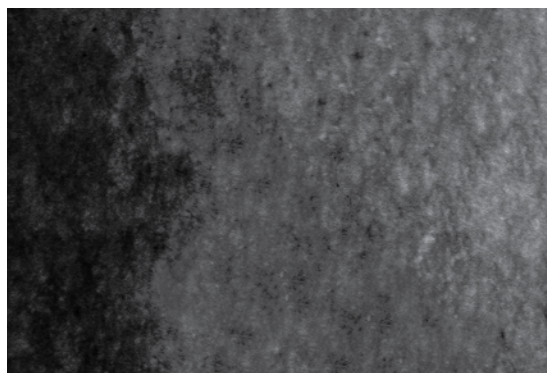
Pressure Limit: 2000 PSI.

Sheet Size: 39.4" x 39.4".

Tensile: 50 PSI.

Part #	Size
400-164	1/64"
400-132	1/32"
400-116	1/16"
400-180	1/8"

No. 400F - FLEXIBLE GRAPHITE WITH 316SS FOIL INSERTED



Description: A flexible graphite sheet reinforced with a 316SS foil. The expanded graphite flake particles are locked together and bonded and laminated to the 316SS foil core in the center.

Service: Flexible graphite sheet has pressure-temperature sealability capabilities that are far superior to reinforced non-asbestos sheet products. It is resistant to chemical attack by virtually all organic and inorganic fluids with the exception of concentrated, highly oxidizing acids. Gaskets cut from flexible graphite sheet seal with low to moderated bolt loads and conform to irregular flange sealing surfaces with both smooth and coarse surface finishes.

Temperature Limit: -328°F to 900°F air, 1800°F steam.

Pressure Limit: 2000 PSI.

Sheet Size: 39.4" x 39.4".

Tensile: 5000 PSI.

Part #	Size	ISSA #
400F-132	1/32"	811026
400F-116	1/16"	811027
400F-180	1/8"	811029

Available with 316SS wire insert, PN: 400W