

No. 2280 - HEAT RESISTANT PURE PTFE FILAMENT PACKING



Larger sizes available on request.

Description: Interlock braid, using pure PTFE filament pre-treated with PTFE dispersion plus a break-in lubricant to reduce the friction coefficient and the frictional heat created under high shaft speeds.

Applications: Valve stems, expansion joints, rotary and reciprocating shafts, mixers, agitators and reactors.

Service: Style 2280 is designed pliable and soft, yet dimensionally stable - which has excellent lubricant and running characteristics. It is suited for high speed rotary shaft service, and handles most chemicals, solvents and gases with exception to molten alkali metals.

Temperature Limit: to 540°F.

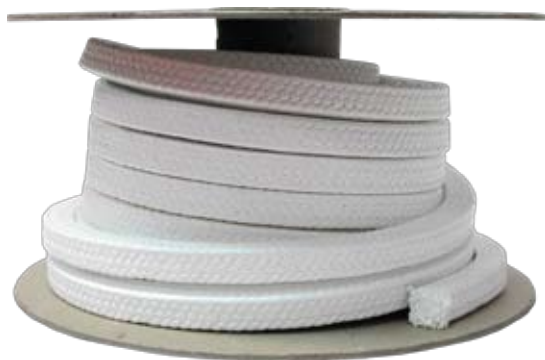
pH Range: 0-14.

Shaft Speed: to 2350 FPM.

Pressure Limit: 435 PSI in rotary pumps, 1450 PSI Static.

Part #	Size	Ft/Lb.	ISSA #
2280-180	1/8"	82.7	810401
2280-316	3/16"	33.8	810402
2280-140	1/4"	21.0	810403
2280-516	5/16"	14.6	810404
2280-380	3/8"	10.0	810405
2280-716	7/16"	7.3	810406
2280-120	1/2"	5.4	810407
2280-916	9/16"	4.3	810408
2280-580	5/8"	3.4	810409
2280-340	3/4"	2.4	810411
2280-780	7/8"	1.9	810413
2280-100	1"	1.5	810414

No. 2290 - PURE PTFE FILAMENT PACKING



Larger sizes available on request.

Description: 2290 is a firm and dense packing that is tightly woven to eliminate large voids. Each filament is thoroughly impregnated with PTFE dispersion before braiding. This serves as a sealant between individual fibers to prevent any leaking through the braid structure. Through a bleaching and shrinking process, all carbonaceous material has been removed and greater dimensional stability has been attained.

Applications: Designed for valves, expansion joints, reciprocating and rotary shafts handling corrosive chemicals, solvents, and gases, with exception of molten alkali metals.

Service: Especially suited for services where no organic materials or lubricants other than PTFE are allowed.

Temperature Limit: to 540°F.

pH Range: 0-14.

Shaft Speed: to 1000 FPM.

Pressure Limit: 215 PSI in rotary pumps, 3600 PSI Static.

Part #	Size	Ft/Lb.
2290-180	1/8"	87.5
2290-316	3/16"	40.2
2290-140	1/4"	21.3
2290-516	5/16"	14.9
2290-380	3/8"	9.4
2290-716	7/16"	7.8
2290-120	1/2"	5.5
2290-916	9/16"	4.4
2290-580	5/8"	3.6
2290-340	3/4"	2.7
2290-780	7/8"	2.0
2290-100	1"	1.6